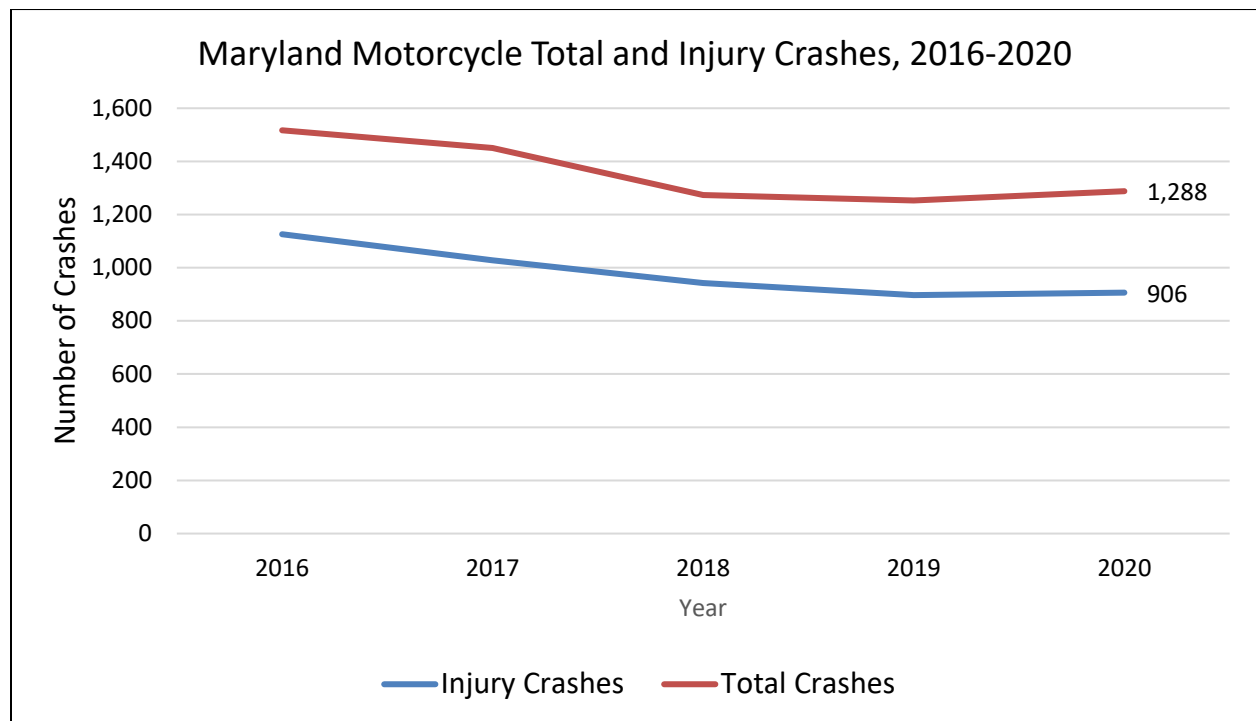


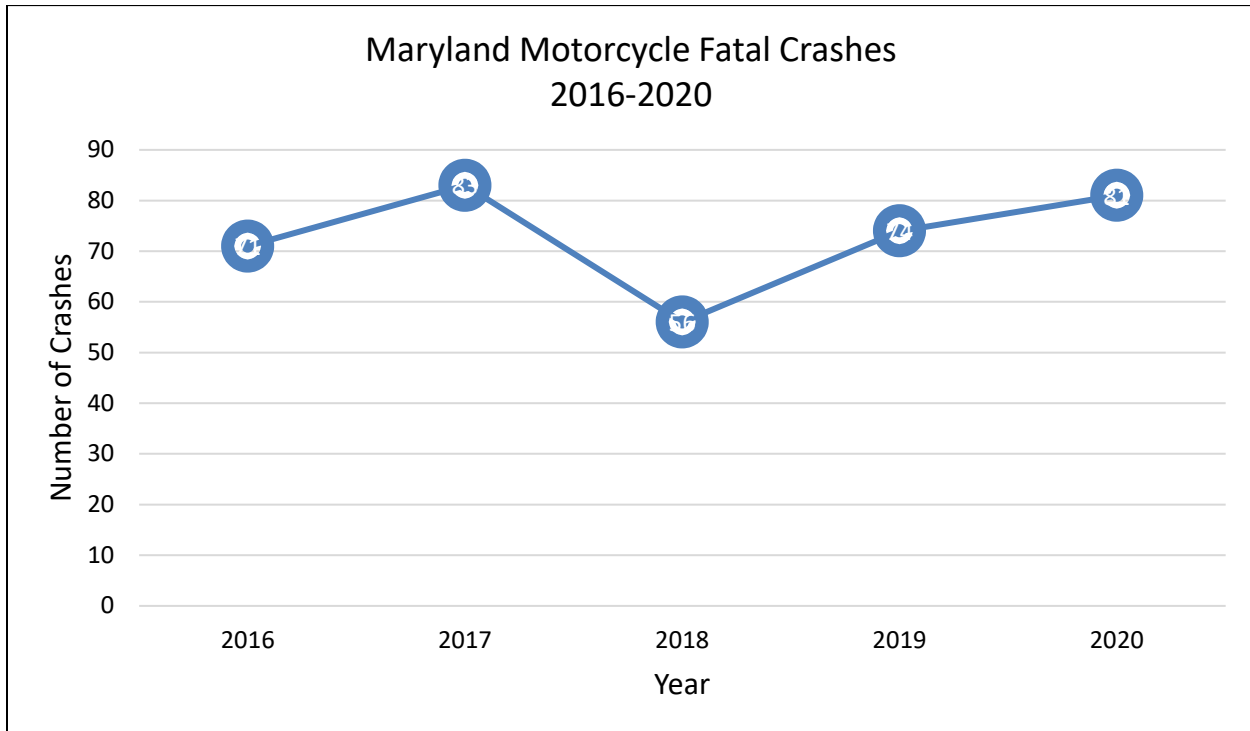
BACKGROUND

Each year in Maryland, an average of 73 motorcycle riders and passengers are killed in traffic crashes and nearly 1,046 riders and passengers are injured each year. Drivers *and* riders have the responsibility to share the road safely. When there is a crash involving a motorist and a motorcycle, the motorcyclist always loses. Because motorcycle riders are not protected by the vehicle like the occupants of a car, motorcyclists are injured in approximately 72 percent of crashes.

The Maryland Highway Safety Office is committed to helping reduce the number of motorcycle injuries and fatalities on our roadways. Maryland’s motorcycle safety program involves rider education and motorist awareness and addresses both motorcyclists and motorists on how to safely share the road.

THE FACTS





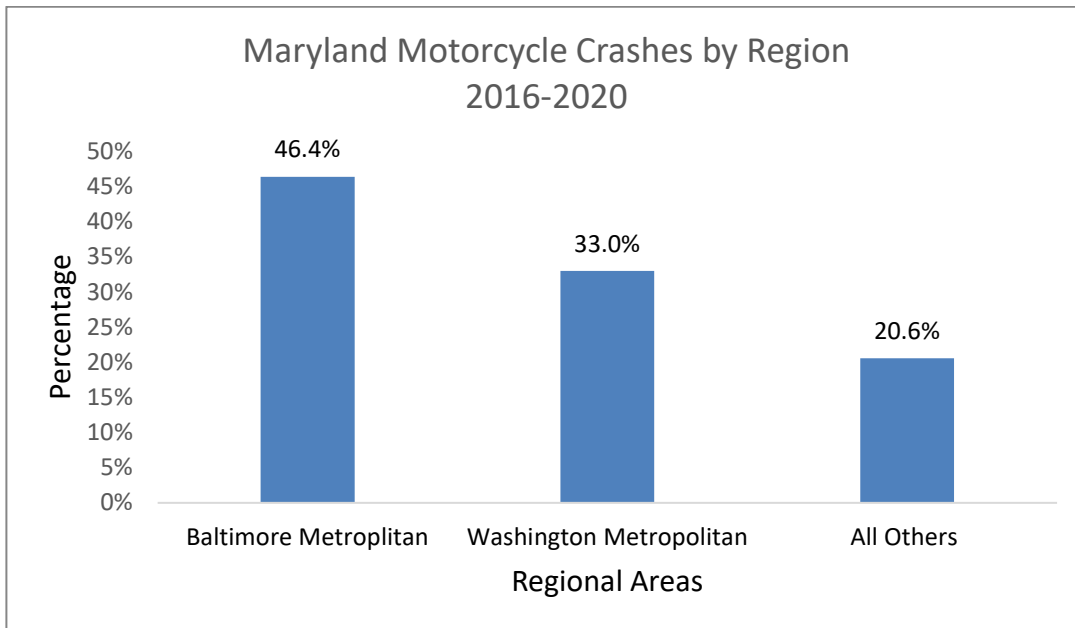
- **Motor vehicle crashes are a huge threat to public health.** Motor vehicle crashes continue to be a leading cause of death in the United States¹. In 2019, approximately 6.8 million crashes were reported; approximately 29 percent resulted in an injury or fatality².
- **Motorcycle-related crashes in Maryland show a reduction.** Over the past five years in Maryland, the highest number of crashes occurred during 2016 (n=1,517). From 2016 to 2020, the number of motorcycle crashes decreased by 15 percent despite a slight increase in crashes in 2020 as compared to 2019³.

¹ CDC National Vital Statistics Reports – 10 Leading Causes of Death, United States, 2018

² Motor Vehicle Crash Data Querying and Reporting All Motor Vehicle Crashes Years: 2015-2019. Report Generated: Thursday, January 20, 2022 (10:39:20 AM).

³ In 2020, the world experienced the COVID-19 pandemic which contributed to significant changes in roadway travel and driver behavior. Reduced vehicle miles traveled and open roadways resulted in an increase in speed and other risky driving behaviors. Consequently, 573 people died in traffic-related crashes on Maryland’s roads, representing an increase of more than seven percent from the previous year’s total of 535, with pedestrian and bicycle fatalities comprising over one-quarter of the State’s roadway deaths. While overall fatalities increased in 2020, the reduced travel contributed to marked decreases for injury and overall crashes at the statewide and jurisdictional level. Therefore, this anomalous year must be considered when drawing conclusions based on the use of 2020 crash data to evaluate highway safety programs and trends.

- **Most motorcycle crashes result in either an injury or fatality.** In Maryland, crashes that involved motorcyclists resulted in injury or death at more than twice the rate of all injury or death related crashes occurring across the State. In 2020, nearly 1,300 motorcycle-involved crashes occurred statewide; more than 75 percent of those crashes resulted in an injury or fatality. Between 2016 and 2020, motorcycle-related crashes accounted for approximately 14 percent of the State’s crash-related deaths.
- **Highly populated regions have the highest concentration of motorcycle crashes⁴.** Most motorcycle-related crashes occurred in Anne Arundel, Baltimore, Montgomery, Prince George’s Counties, and Baltimore City. The Baltimore metropolitan area accounted for nearly half of all motorcycle crashes.



- **Motorcycle-involved crashes are highest during the warmer months.** Unlike statewide crashes, which are distributed relatively even throughout year, motorcycle-involved crashes are more prevalent in April through October, with June, July, August, and September being the peak months for motorcycle crashes. Motorcycle-involved crashes gradually declined through the fall and winter months.

⁴ Baltimore Metropolitan area is comprised of Anne Arundel, Baltimore, Carroll, Harford, Howard and Queen Anne’s Counties, and Baltimore City as designated by the Baltimore Metropolitan Council. The Washington Metropolitan Area is defined as Charles, Frederick, Montgomery, and Prince George’s Counties as designated by the Metropolitan Washington Council of Governments.

- **Weekends and mid-day hours are dangerous times for motorcyclists.** More than half of all motorcycle crashes (54 percent) and fatal motorcycle crashes (54 percent) occurred between Friday and Sunday. In 2020, of the 1,288 motorcycle-related crashes that occurred, approximately 61 percent happened between 1 p.m. and 9 p.m. Fatalities were highest between 7 p.m. and 9 p.m. (22 percent), followed by 2 p.m. to 4 p.m. (20 percent).
- **Motorcyclists in their 20s and early 30s account for a large share of the crashes.** Motorcycle operators aged 21-34 were the most represented age group in motorcycle-involved crashes. Between 2016 and 2020, this age group accounted for approximately 35 percent of all motorcycle operators, 37 percent of injured operators and 43 percent of operator fatalities.
- **Males are involved in most of motorcycle crashes.** Males accounted for 93 percent of injured motorcycle operators and 97 percent of those killed.

**59 percent of fatal
motorcycle crashes
occur between 1 p.m.
and 9 p.m.**